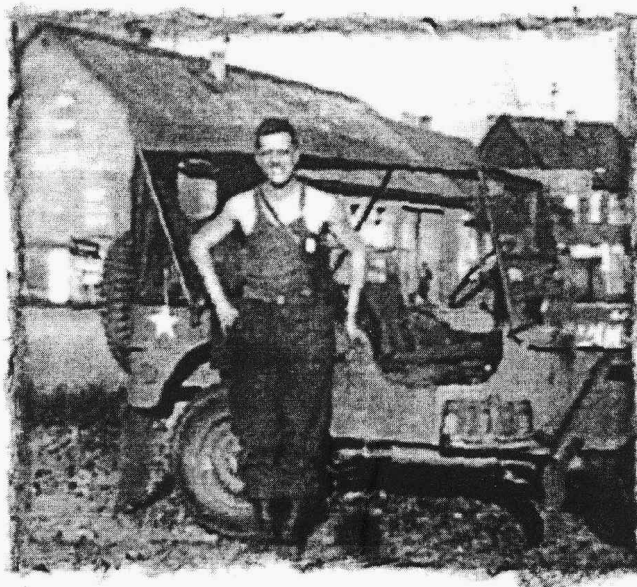


Robert M. Shaver
424th Regiment
106th Infantry Division

What Did You Do in the War, Daddy?



*A brief account of Robert M. Shaver's
experiences during WWII, inspired by
Tom Brokaw's book, The Greatest Generation*

Robert Max Shaver was born in Frankfort, Indiana on February 21, 1923. After graduating from Frankfort High School in May of 1941, he went to work in a local bank as an ~~electronic~~ bookkeeper. His plan was to save enough of his \$60/month salary to go to Purdue University the following year.

Eager to earn more money to pay for college, Shaver joined some friends going to Indianapolis the first weekend in December 1941. They were going to apply for work at the Allison plant. Allison was paying good wages to build engines and related transportation equipment and Shaver planned to show up first thing Monday morning, Dec. 8 to apply. On Sunday December 7, the Japanese attacked Pearl Harbor, thrusting America into WWII. When Shaver showed up at the Allison plant the next day, there were over 5,000 people in line. He did not get the job so he returned to his job at the bank.

Shaver saved enough money to enter Purdue in the fall of 1942. He was registered with the Frankfort Draft Board and, men in his class were being called up for service. In his first semester, he joined the Enlisted Reserve Corps (ERC) which removed him from Draft Board control. ERC did not offer any deferments, but college men where assured they would be allowed to complete the year of school. He finished the second semester and days later, he was called up for active duty in April. By May of 1943, the colleges were essentially cleaned out of able-bodied males. He was sent to basic training at Camp Wheeler, near Macon, GA. In September of 1943, he was sent to the University of Alabama for a 12-week Basic Engineering course as part of the Army Specialized Training Program (ASTP). He was scheduled to go through a second course when the ASTP program was cancelled. He was assigned to the 106th Infantry Division (the Golden Lions)



ASTP at Univ. of Alabama, Fall 1943

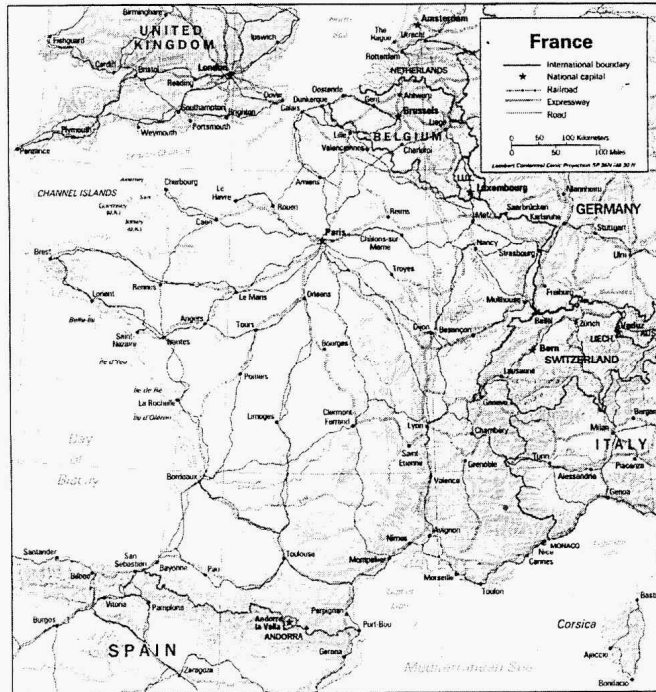
stationed at Camp Atterbury near Columbus, Indiana. He trained as a radioman and a driver through the summer of 1944. After the D-Day landing on June 6, the Allied forces desperately needed reinforcements to support their push across Europe.

On October 1944, the 106th Division shipped overseas to England for a brief period of training. Shortly thereafter, the 106th shipped across the English Channel to LeHavre, France. On December 11, the men of the 106th replaced the U.S. 2nd Division man for man and gun for gun

in the Schnee Eifel area of the German/Belgium border east of St. Vith, Belgium. The normal coverage, for a Division on the front line, was approximately five miles. The 106th's positions extended for 18.5 miles and jutted out into Germany in a salient extending approximately 7 miles. Shaver recalls

the veterans that his unit was replacing telling the new troops that nothing was happening in the Ardennes forest... it was quiet...like a "country club" compared to other regions. The quiet would not last long.

On December 16, the Germans launched the *ARDENNES OFFENSIVE*. The 106th positioned in the Schnee Eifel salient was hit with their full force. After three days the 422nd and 423rd Regiments were surrounded and completely cut off from the rest of the U.S. Army. Both regiments surrendered. Shaver's 424th Regiment, whose position was



south of the 422nd and 423rd, were able to fight and withdraw. The 112th Regiment of the 28th Division joined Shaver's 424th. Each was a Regimental Combat Team including infantry, artillery, medics, engineers, and signal personnel – which meant it could operate on its own. They were successful during the oncoming days of January to help repel the German forces from the former Allied positions. The battle which lasted from December 16 to January 25, 1945 was known in the U.S. Forces journals and history books as *The Battle of the Bulge*.

As a radioman and Jeep driver, Shaver faced a number of challenges. Radio communication was erratic in the heavily forested mountains and 1944-5 was one of the worst winters in 40 years – which added snow to the trees and the roads. He recalls one night when he had just gone to sleep in a bed of hay when he was awoken to pick up a major at the 424th Battalion HQ. His map was not too good and he found himself driving around in the dark, cold countryside. He noticed a small village in the distance and did not worry about the fact it was burning since most villages in the area were burning to some degree. As he drove through town, he knew it had recently sustained heavy shelling because the buildings were really burning and he drove over tin roofs splattered in the street. There was no one to be found so he kept going. Then he spotted a tank in the road up ahead. He approached the tank and yelled, “hey, tanker”, to get some directions. There was no response. The lid was open so he yelled louder, “hey, tanker”. Then his eyes adjusted in



*Radio & Tel. Men at Battle of the Bulge
Commanster, Belgium, Dec. 22, 1944
R.M. Shaver on left.*

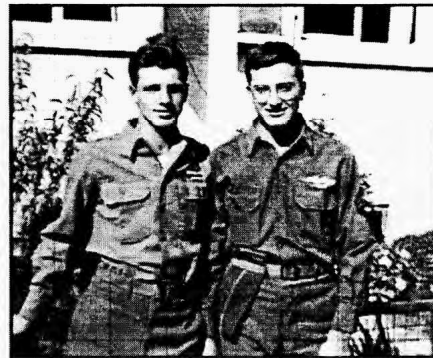
the moonlight and he noticed a huge hole in the side of the tank. No one could have survived that hit. Fortunately, he eventually found the major and delivered him and his assistant to their desired destination.

The 106th Infantry Division, when they caught the brunt of the German Offensive on 16 December 1944:

- Had been on the Continent only 15 days.
- Had been in place in a "quiet" sector for orientation.
- Had the youngest troops (average age - 22) of any American Division on line.
- Had been in their new positions only five days.
- Had no prior warning that the Germans were going to attack.
- Occupied a front line that covered over three times the normal distance.

The *Battle of the Bulge* was the largest land battle of World War II in which the United States participated. More than a million men fought in this battle including some 600,000 Germans, 500,000 Americans, and 55,000 British. The German military force consisted of two Armies with ten corps (equal to 29 divisions). While the American military force consisted of a total of three armies with six corps (equal to 31 divisions). At the conclusion of the battle the casualties were as follows: 81,000 U.S. with 19,000 killed, 1,400 British with 200 killed, and 100,000 Germans killed, wounded or captured.

After withstanding Hitler's last big offensive, the Allied forces pushed into Germany that spring, creating tremendous numbers of POWs. In April, Shaver was assigned to a POW camp guarding hundreds of thousands of German prisoners. Eventually, Germany surrendered on VE Day on May 8, 1944 and Shaver spent the summer helping to clear the POW camp. In August of 1944,



*Radio Men: N. Stroud and R.M. Shaver
Occupation Duty, Bruschal, Ger., Aug. 1945*

he took advantage of the education opportunity that Allied countries were offering and enrolled at the University of Grenoble, in southeast France. He spent 8 weeks studying French language and area studies. Then he went to a replacement depot outside of Paris. He was searching for a new assignment because most of his unit had gone home but he did not have enough points. He got assigned to the Assistant Adjutant General who was headquartered in the luxurious George V hotel in Paris. The General was in charge of all the equipment in Europe and he was a stickler for proper maintenance. The General was known as "Tire Gauge" because he carried a tire gauge to check tire pressure and ~~if~~ he found a tire was improperly inflated, the driver of the vehicle caught hell.

A few months later Shaver was transferred to Frankfort – not Indiana – Germany! Finally, it was his turn to return stateside. He left for home on New Years Eve, 1945 and arrived in Frankfort (Indiana, this time) seven days later. He was discharged on the 13th. After a short detour to the Washington University in St. Louis for one semester, he resumed his studies at Purdue in the fall of 1946.

While at Purdue, Bob Shaver met Pauline Steffen. They were married in 1953 and raised five children. Bob Shaver spent much of his career as a telephone engineer at Western Electric – making good use of that Army Radio and Wire Communications training.

Written by Kurt Shaver, November 2001

The cover picture shows Robert M. Shaver on occupation duty at a POW camp near Ober Ingelheim, Germany in the summer of 1945.

R.M. SHAVER: MILITARY
- WWII

JANUARY 1995

PAGE 1 OF

- 24 PURDUE UNIV., W. LAFAYETTE, IN } JOIN ENLISTED RESERVE CORPS (ERC);
25 29 NOV. 1942. }
26
- 27 CAMP GRANT, ROCKFORD, ILL. } ERC'S CALLED TO ACTIVE DUTY; INDUCTION
28 20 MAY 1943 } CENTER @ CAMP GRANT; Co. "A", BAR
29 RACKS T-148, 1633RD SERVICE UNIT. }
30
- 31 CAMP WHEELER, MACON, GA } BASIC TRAINING @ INFANTRY REPLACEMENT
32 3 JUNE '43 TO SEPT. 1943 } TRAINING CENTER (IRTC); 4TH PLATOON,
33 7TH, TRAINING BATTALION. }
34
- 35 UNIV. OF ALABAMA, MASCALODSA, AL } ARMY SPECIALIZED TRAINING PROGRAM
36 (ASTP); ENGINEERING; COMPANY "E"
37 SEPT. 1943 TO 28 MAR. 1944 } 5-BARRACKS, 4433RD SERVICE
38 COMMAND UNIT. }
39
- 40 CAMP ATTERBURY, JOHNSON COUNTY, IN } SENT AS INFANTRY FILLER TO 106TH INF,
41 28 MAR. 1944 TO 10 OCT. 1944 } DIVISION; ORIGINALLY ASSIGNED TO
42 "G" COMPANY, 2ND BATTALION, 424TH
43 REGIMENT; ONE OF SEVERAL EX-ASTP
44 & EX-HAR CADETS PULLED FROM LINE
45 COMPANY'S, TRANSFERRED TO REGT.
46 & BN. HQ'S, AND TRAINED AS RADIO
47 OR TELEPHONE WIREMEN. 424TH REGI-
48 MENTAL HQQS. CO., RADIO SECTION. }
49
- 50 CAMP MYLES STANDISH, TAUNTON, MASS. } PREPARATION FOR OVERSEAS SHIP-
51 12 OCT. 1944 - 20 OCT. 1944 } MENT; PASS TO BOSTON WITH CHARLIE
52 BROOKES. }
53
- 54 NEW YORK, NY } TRANSPORTED BY TRAIN TO NEW YORK CITY;
55 (OFFICIAL) 21 OCT. 1944 (RMS) } PORT OF EMBARCATION (POE); ON CONVERTED
56 PASSENGER SHIP "AQUATARIUM" (BRITISH);
57 ? 422ND } SISTER SHIP OF "LUSITANIA"; FOOD IS LOUSY,
58 SHIP? } OATMEAL & HARD-BOILED EGGS; AFTER ONE MEAL,
59 LIVED ON BOXES OF HERSHEY BARS FOR RE- } ON BOARD WERE: 424TH INF.
60 - 1ST & 3RD BN'S AND ALL OF 422ND INF }
61
- 62 GREENOCK, SCOTLAND } ANCHOR IN HARBOR; TRANSPORTED TO PIER VIA WINTERIZE FERRIES,
63 (RMS) 28 OCT. 1944 } BOARD TRAIN FOR TRIP SOUTH; BRITISH RED
64 (ON FIRTH OF CLYDE) } CROSS @ STATION HANDING OUT TEA WITH
65 (OFFICIAL) 27 OCT. 1944 } MILK & SUGAR ADDED; THEY'D BEEN AT IT
66 FOR 5 YEARS. }
67
- 68 ADDERBURY, ENG. } SINCE OUR GROUP DID NOT STAY IN GREENOCK
69 (RMS) 29 OCT. 1944 } OVERNIGHT (ALTHOUGH A FEW MEN WERE
70 (OFFICIAL) 2 NOV. 1944) } DETAILED TO STAY & HELP UNLOAD OUR
71 (N. OF BANBURY (CROSS), } "B" BAGS, RADIOS, KITCHENS, ETC). WE
72 ENG.) } ARRIVED @ ADDERBURY ON THE 29TH.
73 424TH HQQS. IN MANAR HOUSE. OUR SECTION
74 ON 2ND FLOOR OF REFURBISHED STABLES. }
75
- 76 LIVERPOOL, ENG. } MADE TWO TRIPS TO QM DEPOT @ HINTREE
77 (TRIPS FROM ADDERBURY) } RACE TRACK, TO PICK-UP OUR ALLOTMENT
78 OF JEEPS & TRUCKS. (ALL OURS WERE LEFT
79 IN U.S.). (NOTE: VEHICLES SHIPPED OVERSEAS
80 WERE USUALLY 'NEW' & WERE ALWAYS IN 'ROCKED
81 DOWN FORM'; WHEELS/TIRES/WINDSHIELD - FLAT ON
82 TOP OF FRAME.) }
83

Bel. MAP

R.M. SHAVER: MILITARY - WWII

7 FEB. 1989

PAGE 2 OF 3

- (S. OF LIEGE, F. OF HODY) (HOUSE - NEW 4TH EYE REST & KEG GROUP FROM 31 DEC TO 4 JAN '45) (IN XVIII CORPS RESERVE) (9/6 JAN '45)
- ANTHISNES, BELGIUM
- CHATEAU MOUFFART, BELGIUM (NEAR HODY, BEL.)
- (F10) SPA, BELGIUM (6 JAN '44) (WAS 1ST ARMY HDQTRS.; BED DOWN FOR NITE IN GYMNASIUM)
- (F10) HUNTING LODGE - NEAR LA REID, BELGIUM (SEVERAL JEEP TRIPS BACK TO SPA - DIV. HDQTRS) (W. OF SPA) (424 @ BAUGNEE) (??)
- (F10) TROIS-PONTS, BELGIUM (IN HARDWARE STORE/HOUSE; FLU; ENCLOSE JEEP; INSTALL JEEP CABLE-CUTTER.) (JAN. 9-15, '45)
- (F10) AISOMONT, BELGIUM (IN FARMHOUSE, KITCHEN; PU DYSENTERY; 16/17 JAN. '45) (ATTN: 13, 14, 15 JAN '45) (22/28 JAN '45) (STAY TIL 22 JAN. '45)
- (S) DEIDENBERG, BELGIUM (25 JAN. '45; PICTURE W/JEEP; SP GUNS - GER) (NEAR MEYERRODE (N. OF SAINT) (SEE EULA V. MCKIBBEN)
- (F9) NANDRIN, BELGIUM (SSW OF LIEGE; ON R. 63 - BETWEEN SORBIT-TINLOT & NEUVILLE-EN-COMDROZ)
- QUATRE BRA, BELGIUM (OUT-OF-LINE FOR RESTOCK; BILLETED W/GOURNADE FAMILY.) (NEAR WATERLOO) (29 JAN. - 4 FEB. '45)
- HUNNINGEN, BELGIUM (4/7 FEB. '45) (COM. SEC.)
- HONSFELD, BELGIUM (NEST OF HDQ'S CO.)
- (F12) LOSHEIMERGRABEN, BELGIUM (21 FEB. '45; BILLET: TRAIN STATION; ACQUIRE GERMAN RIFLE; LOSHEIM GRAB) (7 FEB.; GEN. STROH) (13 FEB. - 5 MAR. '45)
- (12 FEB.; LT. COL. STUMP)
- LOG HUTS IN WOODS, NEAR LOSHEIMERGRABEN. p. 219 -
- BERK, GERMANY (5/14 MAR. '45) (LAND MINES & TREE BARRIERS, GOING IN; TELEPHONE WIRES BREAK CABLE-CUTTER) (5/7 MAR. '45 ATTACK) (END OF COMBAT FOR REMNANTS OF 106TH DIV.) (MOVED OUT - 14 MAR. '45)
- (E. OF LOSHEIMERGRABEN, NOT AS FAR AS STADTKYLL, GER.)
- 7 MAR. '45 106TH COMBAT ENDS
- ST. QUENTIN, FRANCE (15/31 MAR. '45; REOUTFITTING) (15TH ARMY RESERVE) (CAMP COETQUINDON, FRANCE) (7 APRIL '45)
- (RENNES, FRANCE) (16 APRIL '45; @ OLD FRENCH AIR-BASE; ST. JACQUES & ARMY BASE CAMP COETQUINDON) (E.V. MCKIBBEN GETS FIELD COMMISSION; SEE ZIMMERMAN OF PURDUE, BASIC, ASTP; RACE RIOTS.) (16 MAY. '45)
- ★ VE DAY (8 MAY '45 @ REIMS, FRANCE) (BY 18 MAY '45)
- (STROMBERG, GERMANY) (DIV. HDQTRS) (POW DUTIES; 9/12/17 GER. POW'S) (16 MAY '45) (APR. 22, '45)
- HEIDSHEIM, GERMANY (CAMP IN PUP-TENTS BY THE RHINE R.; (ON RT. 61 - 9 MI. FROM RHINE R. - SOUTH OF BINGEN); ADV. PARTY - VET.'S HOUSE - S.S. PHOTO.) (18 APR. '45) (1 MAY '45; V-MAIL ON WEST BANK)
- BAD KREUZWACH, GERMANY (HOUSED IN SCHOOL BUILDING; SHOWERS IN BASEMENT; CENSORSHIP ENDS.) (3 MAY - JUNE '45; V-MAIL)
- OBER INGELHEIM, GERMANY (LUXEMBOURG CITY, LUX. (DIP. & RET. POINTS) (R&R: 16/26 JUNE '45)
- NICE, FRANCE
- KARLSRUHE, GERMANY (DIV. HDQTRS; TRAINING CAMP FOR RE-CONSTITUTED UNITS - OESTRINGEN, GER.) (AUG. '45)
- BRUCHSAL, GERMANY (424TH INF. (?); IN HOUSE #10) (NAME OF BRUCHSAL, GERMANY) (NEAR KARLSRUHE, GER.) (TRAINING WITHIN A CIVILIAN AGENCY)
- SEE "CUB VOL. 8 #1"
- TWCA, UNIV. OF GRENOBLE (FRENCH LANGUAGE & AREA STUDY; TRIPS;) (AUG. 6 THRU SEPT. 21, 1945)
- GRENOBLE, FRANCE (1ST ARMY BARR. - 8 AUG. '45 - 2ND A.B. - 10 AUG. '45)

R.M. SHAVER: MILITARY - WWII

7 FEB. 1989

PAGE 3 OF

- ~~1942~~ 1ST ATOMIC BOMB (8 AUG. '45); 2ND ATOMIC BOMB 10 AUG. '45
- ★★ VJ DAY (14 AUG. '45) (ENDS CHANCE OF TRANSFER TO PACIFIC);
- VEUREY, FRANCE (ISERE PROVINCE; CHATEAU MONTAUD,
(STILL @ GRENOBLE, FR) - COL. A.M. PIEG & FAMILY, DAU.: AUDREE,
COUSIN OF LILLIAN GUIDI (NICE, FR.))
- 106TH DIV. SHIPS FOR HOME, WITH REPLACEMENT HIGH POINT MEN.
(LV'S - 10 SEPT. '45; ARRIVES NYC - 142 OCT. '45)
- ETAMPES, FRANCE (6/11 OCT. '45; 19TH REPLACEMENT DEPOT,
I & E SEC., 447TH Co., 85TH BN)
- PARIS, FRANCE (OCT. - (TSFET, ADJUTANT GENERAL'S AUDIT
SECTION; GEORGE V HOTEL - OFFICE.)
- (NEAR 2)
ST. CLAUD, FRANCE (BILLETS IN REQUISITIONED HOUSES;
INTERESTING HOUSE-DECORATING)
- GARCHES, FRANCE
- FRANKFURT, GERMANY (TSFET, AG - AUDIT SEC. TRANSFERRED
(... NOV. '45 - DEC. '45) TO GERMANY'S OFFICE IN CITY,
BILLETS IN GERMAN ARMY BARRACKS,
BEYOND H.G. FARBEN COMPLEX.)
- PARIS, FRANCE (POINTS COMPILED TO BE SHIPPED
(... DEC. '45 - DEC. '45) HOME FOR DISCHARGE; BILLETS - IN
MAGAZINE DUELEL (?). IN MONTMARE)
- CHATEAU DE VINCENTNES (PUT IN ORDNANCE CORPS "CARRIER UNIT"
(OLD FR. ARMY POST) (FRANCE SOUTHERN PARIS) FOR SHIPMENT BACK TO USA.) IN MONTMARE
(ST. VALERY, FR.)
- LE HAVRE, FRANCE (CAMP LUCKY STRIKE, A LOAD ON
(... DEC. '45 - 31 DEC. '45) "VULCANIA" TROOPSHIP - 31 DEC. '45;
SHIP-OUT: 1 JAN. '46; ARRIVE NYC:
8 JAN. '46.)
- FT. DIX, NEW JERSEY (SEE CHARLIE BROOKES, BERNARDSVILLE; LV.
(@ JAN. '46 - JAN. '46) ON TRAINLOAD OF TROOPS FOR CAMP
ATTERBURY, IND - FOR DISCHARGE)
- CAMP ATTERBURY, IND. ★★ (DISCHARGED: 13 JAN. 1946;
(... JAN. '46 - 13 JAN. '46) SIGN-UP FOR RESERVES.)

GOES AT START	24 Nov. '42 - 20 MAY '43	JOIN ENLISTED RESERVE CORPS (ERC); PURDUE UNIV., LAFAYETTE, IN
	20 MAY '43 - 3 JUNE '43	CAMP GRANT, ROCKFORD, ILL. CO. A, BARRACKS T-14B 1633 BR SERVICE UNIT
	3 JUNE '43 - SEPT. '43	INDUCTION CENTER INFANTRY REPLIC. TRN. CNTR. (IRTC)
	SEPT. '43 - APRIL '44	CAMP WHEELER, MACON, GA. 4TH PLATON, 724 TRAINING BN.
	APRIL '44 - AUG. '45	UNIV. OF ALABAMA, TUSCALOOSA, AL (AST) ARMY SPECIAL TRAINING PROGRAM SCU 4433, CO. E, J BARRACKS CAMP ATTERBURY, IN & ETO 106 TH INFANTRY DIVISION 424 TH REGIMENTAL HQRS CO. - RADIO SEC.

(FRANKFORT, IN)

(LUTON & LONDON, ENG.)
(TRIPS FROM ADDERBURY)

HAROLD MOYER, CID IN MP'S, PICKED ME UP ON MY ONLY WEEK-END FAKS. MADE QUICK TOUR OF LONDON. OVER NIGHT IN LUTON, ENG..

SOUTHAMPTON, ENG.
(AR) 3 DEC. 1944
(LY) 4 DEC. 1944

WITH RADIO JEEP IN CONVOY TO SOUTH-AMPTON. LOST CONVOY. STAY OVER NIGHT & BOARDED LST NEXT DAY. JEEPS ON TOP DECK. ROUGH CROSSING.

LE HAVRE, FRANCE
(OFFICIAL) 7 DEC. 1944 (RMS)

ENTER PORT IN AMIENS; TOLD TO PROCEED UP THE SEINE RIVER; ANCHOR @ NIGHT & POST GUARDS ON ALL SIDES OF SHIP; MANY SHIPS SUNK IN RIVER - DANGEROUS.

ROUEN, FRANCE
(RMS) 8 DEC. 1944
(OFFICIAL) 7 DEC. 1944

ARRIVE @ ROUEN; BRITISH ENGINEERS OPERATING LANDING AREA; GEN. JONES CAR FIRST OUT OF LOWER DECK OF LST. UNLOAD FOR TRIP TO BIVOUAC AREA.

YERVILLE, FR.
(RMS) 8 & 9 DEC. 1944
(OFFICIAL) 7 DEC. 1944

BIVOUAC IN OPEN FIELD; MUD, MUD, MUD; OVERSHOES DELIVERED & DUMPED INTO THE FIELD; FIND YOUR OWN'S, MY SIZE - GONE; MANY OVERSHOES WITH CUTS THRU THEIR SOLES; TAKE A PAIR & WEAR WITHOUT SHDES.

TRIP TO THE FRONT: 270 MILE ROAD-MARCH (VEHICLES) TO ST. VITH AREA

AMIENS, FR.
BAUPAUME, FR.
CAMBRAI, FR.
VALENCIENNES, FR.
MAUBEUGE, FR.
BEAUMONT, FR.

ENTIRE TRIP, FROM AMIENS, FR. TO BIVOUAC OUTSIDE ST. VITH, BEL. WAS MISERABLY COLD. WE WERE WEARING SHIRTS, TOP & BOTTOM LONG PANTS, WOOL SHIRTS & TROUSERS, KNIT SWEATER, FIELD JACKET, OVERCOAT, WOLF HAT, HELMET LINER, & STEEL - & WE STILL FROZE.

PHILLIPPEVILLE, BEL.
(NITE OF) 10 DEC. 1944

MOTOR TROUBLE WITH MY JEEP; OUR 1ST SGT. WAS RIDING WITH OUR MOTOR SGT. & OUR REPAIR MECHANIC @ END OF CONVOY; THEY FIX JEEP, BUT NIGHT APPROACHED; WE ALL BEDDED DOWN ON COBBLES IN CITY SQUARE; COLD & HARD BED.

DINANT, BEL.
MARCHE-EN-FAMENNE, BEL.
BRACHT DE FRAITURE, BEL.

BIVOUAC/Woods -
ST. VITH, BEL.
(RMS) 11 & 12 DEC. 1944
(OFFICIAL) 10 DEC. 1944

DRIVE UP LOGGING ROADS; SNOW 1 FOOT DEEP; SLEEP ON GROUND; CAN'T PITCH PUP TENTS, AS PINE TREES NEAR ROAD HAVE TRUNK BRANCHES TO THE GROUND; IT'S 1:00 AM; WE BREAK OFF BRANCHES THAT WE CAN & FLOP. SNOW FROM BRANCHES FALL ON FACE ALL NIGHT LONG.

HECKHALENFELD, GER.
(OFFICIAL) 13 DEC. 1944 (RMS)
(E. OF BURG-REVLAND, BEL.)

CP OF 424TH INF; RADIO SEC. BILLETED IN A SMOKEHOUSE @ A TYPICAL FARMHOUSE/BARN COMBINATION; GERMAN-BUILT DOUBLE-DECK BUNKS. SOME STAW FOR MATTRESS. MAKE OUR SINGLE WINDOW IN ROCK WALL. SET-UP RADIO NET TO 1ST 2ND & 3RD BN'S.

OFFICIAL

DAY OF 10 DEC. 1944

DAY OF 11 DEC. 1944

SE 1:12 PM MAT G-1

1
2
3
4
5
6
7
8
9
10
11
12
13
14
15
16
17
18
19
20
21
22
23
24
25
26
27
28
29
30
31
32
33
34
35
36
37
38
39
40
41
42
43
44
45
46
47
48
49
50

HECKHALENFELD, GER.
14 DEC. 1944

MOTOR SGT. TELLS ME TO TURN IN MY 'BAD' JEEP; HE & MECHANIC WILL CANNIBALIZE MY JEEP FOR 'GOOD' PARTS — TIRES, 'CAT'S EYE' NIGHT LIGHT, AXE, SHOVEL, & TRANSMISSION. SAID PARTS TO GO ON 'OTHER JEEPS IN OUR COMPANY' THAT NEEDED SUCH.

(NOTE: TIRES: C-RATION CANS THAT WERE OPENED & EATEN HAD TO BE KEPT OFF OF ROADS. IF CARELESSLY DISCARDED THEY COULD LAND WITH 'SHARP' END UP. WHEN A TIRE RAN OVER SUCH A CAN, IT COULD RECEIVE A PERFECT, ROUND BISCUIT 'CUT' THRU THE RUBBER & TO THE CORD LAYER. A VERY DANGEROUS TIRE TO USE IN A COMBAT SITUATION.

AFTER SWITCHING ALL ITEMS, THEY HAD CONVERTED MY RADIO JEEP TO A JUNKER, THAT NOW HAD:

- 4 - CUT TIRES
- NO 'CAT'S EYE' NIGHT LIGHT
- NO ATTACHED AXE OR SHOVEL, &
- A RUINED TRANSMISSION THAT HAD BEEN (MISTAKENLY) DRIVEN THE ENTIRE TRIP FROM FRANCE IN 4-WHEEL DRIVE, 2ND GEAR. IT WAS NOW LIMITED TO ONLY 2ND GEAR / 4 WHEEL DRIVE.

DRIVEN BY
CHAPLAIN'S FIRST,
WHO LATER SET
FIRE (ACCIDENT)
TO HECKHALEN-
FELD C.P. IT
BURNED 3-DAYS.

THE ORDNANCE PEOPLE WERE READY TO RECEIVE THE JEEP ON DEC. 16TH OR 17TH. LITTLE DID WE KNOW

HECKHALENFELD, GER.
16 DEC. 1944

DAY 1

DAY
1"BATTLE OF
THE BULGE"
STARTS

WE WERE TOLD THAT IT WAS A "QUIET FRONT". A REST AREA; NO ACTION EXPECTED UNTIL U.S. OFFENSIVE IN THE SPRING; SHELLING STARTED ABOUT 5:30 AM; GERMANS "WALKED" THE SHELL HITS TOWARDS US; A RADIO MAN WAS AT DOOR OF HUT; SHELL BURST KNOCKED HIM BACK & INSIDE; THE VERY NEXT SHELL TORE THRU OUR ROOF, WAS DETONATED IN THE 'ATTIC', AND SHRAPNEL SPEWED IN. CEILING BEAMS CUT & FELL TRAPPING ME IN SLEEPING BAG UNDER A BEAM. SLEEPING BAG TORN AT FOOT. MY CLOTHING & GAS MASK WRECKED, AND OUR SCR-284 RADIO KNOCKED OUT, WAS RESCUED BY ANOTHER RADIO MAN, WHO LIFTED OFF THE BEAM. WE ALL WENT INTO THE SMALL 'CELLAR' UNDER OUR SMOKEHOUSE. IT WAS FLOODED WITH OVER 6" OF WATER, BUT WE HAD COMMENCED FILLING WITH SMALL DIAMETER LOGS. COULDN'T STAND UP. SO SAT IN A SQUAT POSITION. SHELLING LASTED AN HOUR.

DAY 1

HECKHALENFELD, GER.
16 DEC. 1944
(CONTINUED)

(EXPLODING) ~~THATCHED~~ ~~WAS~~ ~~THE~~
SHELL THRU OUR ROOF. ~~OF MY BUNKER~~ RADIO
WAS HIT BY SHELL FRAGMENTS. RADIO IS
RUINED. THUS, NO RADIO CONTACT WITH OUR
FRONT-LINE BATTALIONS. ALL TELEPHONE
LINES ALSO CUT BY SHELLING. WOUNDED
ON THE GROUND IN OUR BARNYARD. I RUN
UP TO OUR RADIO SUPPLY BARN, GET REPLACEMENT
RADIO, WE RECONNECT WITH OUR
BATTALIONS. MORE SHELLING DURING THE
DAY. GERMAN PRISONERS START COMING
IN FROM FRONT-LINE, & ARE HELD IN OPEN
AREA, NEXT TO THE VILLAGE CHURCH.

HECKHALENFELD, GER.
17 DEC. 1944

DAY 2

COMMUNICATIONS SGTS. FROM OUR BATTALIONS
COME BACK FOR FRESH RADIO BATTERIES,
NEW RADIOS, ETC. MORE SHELLING DURING
THE DAY. GERMAN PRESSURE & PENETRATION
ON BOTH OUR LEFT & RIGHT FLANKS.
LATE IN DAY, TOLD WE WILL PULL BACK
THAT NITE. WE DESTROY ALL RADIOS &
SUPPLIES THAT WE CAN'T TRANSPORT BUT
WAS ORDERED TO RECOVER MY "RED LINED"
JEEP, PICK UP (2) RADIO MEN IN LOFT
OF A BARN, & FOLLOW ANY CONVOY GOING
WEST, ON LOGGING ROADS IN FOREST. NO
CONVOYS VISIBLE, IT WAS LATE, SO I
ATTEMPT ENDED IN OPEN FIELD. WENT
BACK TO REGT. H.Q.'S. IT WAS DIFFICULT
TO OPERATE WITHOUT MAPS. FINALLY
FOLLOWED THE VERY LAST TRUCK OUT AS
THE LAST OF OUR RIFLE CO.'S MARCHED
OVER THE HILL. ON THE FOREST ROAD(?)
WE WERE PLAGUED BY SEARCH LIGHTS,
FLARES, GERMAN PATROLS, ETC. FINALLY
INTO BELGIUM NEAR BRACHT. (18 DEC. 44)

DAY 2

DAY 3

BRACHT, BELGIUM
(RMS) 18 DEC. 1944
(OFFICIAL: 17 DEC. 1944)

AUBURN
UNIV. ASTP

OUR CONVOY OF VEHICLES HALTED ON THE
MUD & GRAVEL ROAD, OUTSIDE OF
BRACHT, BELG. STILL IN HEAVY WOODED
AREA. APPROX. 1:30 AM, 18 DEC. 1944,
CHARLIE BROOKS TALKED TO ONE OF HIS
EX-ASTP BUDDIES WHO WAS WITH A GROUP
OF LINE COMPANY RIFLEMEN. SOME HAD
TEMPORARILY BEEN POW'S OF
THE GERMANS, BUT HAD ESCAPED BY
RUNNING WHEN HEAVY U.S. ARTILLERY
BARRAGES CAME INTO THEIR AREA. RIFLE CO.
LEAVES TO TAKE UP POSITIONS. WE GET
ORDERS TO MOVE A FEW KILOMETERS
TO BURG REULAND.

DAY 3

BURG REULAND, BEL.
18 DEC. 1944
(OFFICIAL: 18, 19, 20 DEC. 1944)

SEVERAL

OUR REGT. H.Q.'S CO. FIELD KITCHEN WAS THE
ONLY ONE OPERATING IN THE AREA. IT
SERVED ANYONE WHO APPEARED. CAN ONLY
SERVE MEALS A DAY. SAME MENU EACH DAY:
PANCAKES, MARMALADE, & COFFEE.
MOTOR SGT. & HIS MECHANIC SAY THAT

BURG REVLAND, BEL.
18 DEC. 1944

THEY HAVE A NEW MOTOR FOR MY JEEP. THEY HAD SALVAGED ONE FROM A WRECK. JUST THE TWO OF THEM HAD DISCONNECTED AND LIFTED MOTOR INTO THEIR 3/4-TON. TALK ABOUT AN ADRENALIN HIGH

WE COMMENCE MOTOR EXCHANGE IN BARN. IMMEDIATELY CAME UNDER GERMAN ARTILLERY BARRAGE. MOTOR SGT. HURT BY FALLING ROOF TIMBERS, SHATTERED BY SHELLS. WE SMASH OUT BACK WINDOW IN BARN (NO DOORS), JUMP OUTSIDE, AND START RUNNING ACROSS OPEN FIELD. REALIZE THAT BARRAGE IS CATCHING UP TO US. TAKE PARTIAL COVER IN A VERY SHALLOW DITCH. WE ESCAPE INTURLY, BUT BARRAGE REACHES CROSSROADS, DAMAGES OUR FIRST AID STATION & KILLS OUR REG. MT. DENTIST WHO WAS HELPING THE DOCTORS & AID MEN.

(BARRAGE PASSES THRU US.)

THE OTHER RADIO MAN & I RETURN TO THE BARN, WITH THE OTHERS. MOTOR SGT. & MECHANIC PREPARE TO EVACUATE THEIR 3/4-TON TRUCK. MY JEEP IS IN-OPERABLE DUE TO ALL THE PREP ON IT. MESS SGT. ASKS US TO HELP IMMEDIATELY, TO AID IN LOADING HIS FIELD KITCHEN & SUPPLIES, AS HE IS EVACUATING, ALSO, SHELLS STILL HITTING CROSSROAD. LOAD UP MESS TRUCK & WE WITHDRAW TO GRUFFLINGEN, BEL.

19
DAY
4

GRUFFLINGEN, BEL.
18 & 19 DEC. 1944
(OFFICIALLY REG'T,
CP NEVER HERE)

T/A SHARKEY, OTHER RADIO MAN, & I, HELP MESS SGT. GET KITCHEN UNLOADED & SET UP. THEN GO ACROSS ROAD TO SMALL HOUSE/BARN THAT MOTOR SGT. IS TAKING OVER.

MOTOR SGT. GOES BACK TO BURG REVLAND TO REPORT, COMES BACK TOWING MY INOPERABLE JEEP. MAIL CLERK IS STEERING IT. THE FOUR OF US PULL MY ORIGINAL MOTOR, WITH NO PULLEYS. WE MANAGED IT WITH THREE HAY-STACK POLES, SOME ROPE, & LOTS OF STRAINING. WE REVERSE THE PROCEDURE TO DROP IN THE NEW MOTOR. SKINNED KNUCKLES, ACHING GUT, SWEARING, & PRESSURE TO GET IT DONE, THE GEARSHIFT, TRANSMISSION HOOK-UP, ETC. WERE TOUGH. ONLY HAD A SINGLE-BULB WORK-LIGHT, CONNECTED TO VEHICLE BATTERY.

WORKED TIL ABOUT MIDNIGHT, BUT "FROG" PLACEMENT IN GEARSHIFT WOULD NOT DROP INTO PLACE. MOTOR SGT. & I WERE COMPLETELY "BUSHED" & SPANNED OUT IN THE HAY MOW. SHARKEY & MOTOR MECHANIC KEPT AT IT, UNTIL

GRUFFELINGEN, BEL. COMPLETED, APPROX. 2:00 AM, 19 DEC. 1944.
 (CONTINUED)
 18 & 19 DEC. 1944 WE STARTED THE JEEP AROUND 8:00 AM, 19 DEC. 1944, & SHARKEY AND I RETURNED TO BURG REULAND.

DAY 5

BURG REULAND, BEL. 19 DEC. 1944: RETURN FROM GRUFFELINGEN.
 19 & 20 DEC. 1944 PERIODIC ARTILLERY BARRAGES STILL COMING IN. TAKE COVER IN CELLER WITH GERMAN-SPEAKING BELGIUMS, OWNERS OF THE FARMHOUSE/BARN. GET TWO MP'S AS EXTRA MEN TO HELP IN NIGHT GUARD DUTY.

(DUPUY, P. 155, STATES "... 424TH CP @ (GRUFLANGE) GRUFFELINGEN, BEL. @ 3:00 PM, 20 DEC. 1944")
 20 DEC. 1944: MORE SHELLING. OUR LINE COMPANIES ARE BEING HARD PRESSED. OUR 1ST SGT. ROUNDS ALL MEN HE CAN FIND & GO TO GUARD ONE ACCESS ROAD INTO VILLAGE. NO GERMAN BREAK-THRU @ THAT POSITION, & GROUP COMES BACK.

424TH LINE IS STEADY ANCHORED FROM BRACKT OUR BEARS & THRU BURG REULAND DOWN TO 50 YD EFFIC IENCE, HE NEVER DIVE TO PREVENT BOTH FIGHTING UP IN THE FLANKS AND.

GUARD DUTY POSITION THAT NITE IS INSIDE HOUSE. NO EXTERNAL HOUSE SENTRIES. POSITIONED @ 2ND FLOOR WINDOW, OVER MAIN ENTRANCE, TO USE HAND GRENADES ONLY, AS FIRING WEAPONS WILL BETRAY LOCATION.

WE LATER FIND OUT LATER THAT @ 12:30 PM THAT XVIII AIRBORNE CORPS TOOK CONTROL OF: 106 INF. DIV., 7TH ARMORED DIV., 3RD ARMORED DIV., 82ND AIRBORNE (ALREADY IN THE CORPS), & THE 30TH INF. DIV.

DAY 6

BURG REULAND, BEL. 21 DEC. 1944
 IN THE AM, WE BEGIN RECEIVING INCOMING SHELLS WHENEVER WE GO OUTSIDE OR TRY TO MOVE OUR VEHICLES.

WE ARE IN CELLER, AND ARE TOLD THAT THE NEXT LULL IN THE SHELLING, WE ARE TO RUSH OUT, LOAD INTO OUR VEHICLES AND TEAR OUT OF TOWN TO COMMANSTER, BEL. WE FOLLOW THE ORDER, ONLY OUR T & R PLATOON IS ENDANGERED & THEY DO A 180° TURN WITH ALL VEHICLES IN PLACE & JOIN US VIA ANOTHER ROAD.

COMMANSTER, BEL. 21 DEC. 1944
 REACH COMMANSTER IN LATE AFTERNOON. OUR CONVOY HALTS ON ROAD ON EDGE OF VILLAGE. (I HAVE A COUPLE OF PICTURES OF THIS.) LEARN FOR FIRST TIME OF LOSS OF 422ND & 423RD REGTS. QUITE A JOLT. HOW HAVE WE BEEN SPARED?

BED DOWN IN EDGE OF WOODS. M/SGT. YODSNUKIS DIGS HIS SLIT-TRENCH IN OPEN FIELD & SLEEPS IN IT - IS FEARFUL OF "TREE-BURSTS" IN THE WOODS.

Indianapolis, IN 46226
January 20, 1998

John Kline, Editor, "The Cub"

Re: 424th Infantry data

Per our conversation a couple of days ago, am enclosing some data for your possible use.

- 1.) Map of 424th movements from 16 Dec. 1944 to 5 Mar. 1945; and "Official" dates and locations of the Regimental C.P..
- 2.) Personal Journal - During combat, I tried to record all the towns and villages that we were in.

In later years, I tried to clarify these towns and dates. I also started to add enough memory-jogger notes, so as not to forget everything.

Although I had an opportunity to revisit Belgium and Germany in 1978, I declined because I just couldn't face those creeps. It's ironic too, as all of my ancestors are German. The original one came from Sachenhhausen, Ger. (near Wertheim, on the Main/Tauber River junction). Landed in Philadelphia in 1752.

In 1989, my wife and I went on an European tour with a local Choir group. My wife is the Church singing expert. I served as guard of purses & cameras, as well as a program distributor.

We toured four countries, but mostly in Germany. It was a good trip. We made arrangements before leaving the US, to get a rental car and stay over for another week. The tour group went home and we took off to see how many of the wartime villages I could find. Was able to revisit many of the villages that the 424th had been in. After 44 years, however, almost everything had been fully repaired, and many new structures in place. Only recognized Aisomont, Belgium billet.

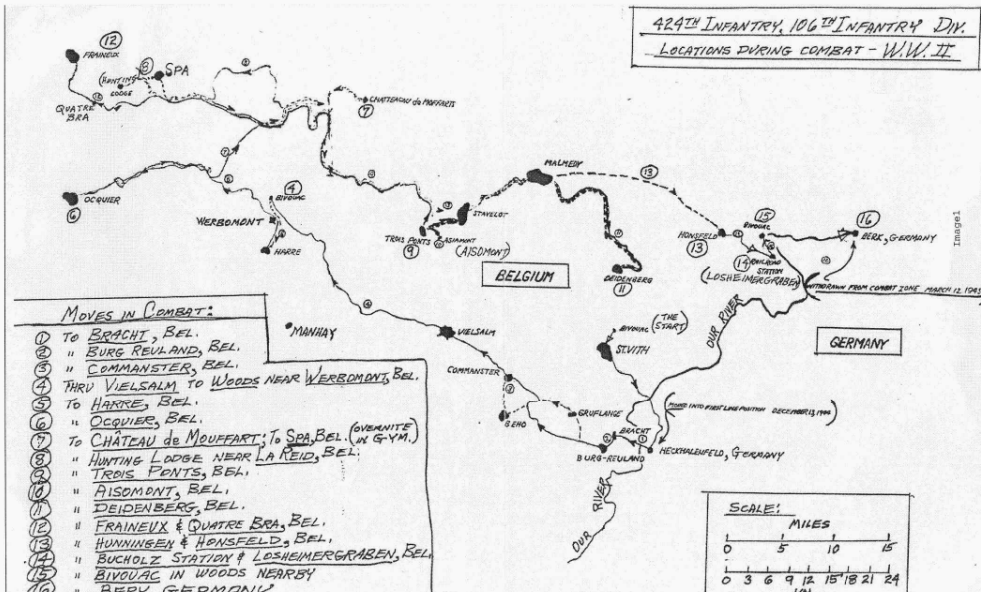
In preparation for our solo trip, I took my old Journal list and updated what I could. (See 2.1)

At the 50th Anniversary of the Battle of the Bulge, one of my sons became very interested in (due to newspapers and TV exposure) getting more information on the Bulge. He asked me to recommend a book. I recommended MacDonalds-"A Time for Trumpets", and showed him my copy. I thought he'd pass out at the thickness of the book! It became evident that a short-short story was needed. I started to expand the information in my Journal in January 1995. Unfortunately, I haven't completed all items. (See 2.2 for Completions to date, and 2.3 for Work in Progress.

- 3.) I've also included data on Joe Giarusso and his thesis. and my write-up in the paper.

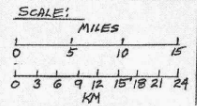
Bob Shaver
Robert M. Shaver
106th ID, 424th Inf

424TH INFANTRY, 106TH INFANTRY DIV.
 LOCATIONS DURING COMBAT - W.W. II



MOVES IN COMBAT:

- ① To BRACHI, BEL.
- ② " BURG REULAND, BEL.
- ③ " COMMANSTER, BEL.
- ④ THRU VIELSALM TO WOODS NEAR VERBONDONT, BEL.
- ⑤ To HARRE, BEL.
- ⑥ OCQUIER, BEL.
- ⑦ To CHATEAU de MOUFFART; To SPA, BEL. (GVERNITE IN G-Y.M.)
- ⑧ HUNTING LODGE NEAR LA REID, BEL.
- ⑨ " TROIS PONTS, BEL.
- ⑩ AISMOND, BEL.
- ⑪ DEIDENBERG, BEL.
- ⑫ FRAINEX & QUATRE BRAS, BEL.
- ⑬ HUNNINSEN & HONSFELD, BEL.
- ⑭ BUCHOLZ STATION & LOSHEIMERGRABEN, BEL.
- ⑮ BIVOUAC IN WOODS NEARBY
- ⑯ BERK, GERMANY



AS OF: 1-19-98

(1)

LION IN THE WAY - DUPUY

P. 224 ETC. - CHAPTER 17
PRISONERS BY THE MILLIONS

14 MAR '45 - • DIV. OUT OF BATTLE ZONE.
• TO ST. QUENTIN, FR. FOR REHAB. & REORG.
• PASSING FROM 1ST ARMY TO 15TH ARMY.
• TRANSFERRED TO RESERVE BEHIND 66TH
INF DIV @ LORIENT & ST. NAZAIRE
FR.; NAZI POCKETS & SUBMARINE
PENS.

6 APR '45 - • ARRIVE @ RENNES, FR.
• RECEIVE 3RD INF REGT ()
& 159TH INF REGT, TO TEMP.
REPLACE "LOST" 422ND & 423RD
• ALSO RECEIVE 401ST & 627TH FA BN
TO REPLACE "LOST" 589TH &
590TH FA BNS,
• ALSO RECEIVED 6,600 OFFICERS
& MEN TO "REBUILD" 422 & 423
INF REGTS, & 589 & 590 FA BN.

15 APR '45 - • FORMAL 'RECEIVING OF COLORS' OF RE-
EQUIPT UNITS.

16 APR '45 - • 106TH ABRUPTLY ASSIGNED
POW GUARD DUTY IN GER.
LEAVE WITH 1ST ADVANCE PARTY

(RMS) 18 APR '45 - • ^{BY} CAMPED IN SHELTER HALVES, BANK
OF RHINE RIVER.

BY 25 APR '45 - • 159TH INF → REHAGEN
• 106TH DIV PARTY → MANNHEIM (2.)
• REMAINDER OF DIV. → STRUMBURG VICINTY

(RMS) ----- • ADVANCE PARTY IN BAD KREUZNACH.
(VETERANARIAS'S HOUSE, SS PHOTOS)
BY 30 APR '45 - • DIV. HAD 5-ROW ENCLOSURES & 105,272 PRISONERS
OBER INGELHEIM

(RMS) 3 MAY '45 - • BILLETED IN A SCHOOL, SHOWERS;
JUNE CENSORSHIP ENDS,

16-26 JUNE '45 - • NICE, FR. - R&R.

12 JULY '45 - • DIV. TO KARLSRUHE, GER. AREA
① • 424TH → BRUCHAL, GER. (NINE PARTS)
(HOUSE #10;)

• ETTLINGEN, GER. (HOUSE #10?)

21 JULY '45 - • OPERATION: TALLYHO (VI CORPS),
4:30 AM TO-HOUSE RAID OF AREA
SEARCH FOR NAZI'S, GUNS,
ETC.,

6 AUG THRU

21 SEPT '45 - • TWCA @ UNIV. OF GRENOBLE, FR.

25 APR. '45 - 159TH INF → REMAGEN (3)

• 106TH DIV. ARTY - MANNHEIM

• REMAINDER OF DIV. - STAMBURG
VICINITY

• ADVANCE PARTY (INCL. RMS) @
BAD KREUZNACH

• ST. QUENTIN, FR. (16 MAR. - 6 APR '45)

AREA NEAR: [✓] 15 & W
(1) • RENNES, FR. (16 APR. '45) ST. JACQUES
ARMY BASE

(3) • BAD KREUZNACH, GER. (APR. '45) (SS-HOUSE OF ANIMAL VET)

(2) • HEIDSHEIM, GER. (18 APR. '45) (CAMP IN FURTENTS
ON RHINE RIVER)

(4) • OBER INGELHEIM, GER. (3 MAY - JUNE '45) (BILLET-SCHOOL
POW CAMPS)

*** VE DAY (8 MAY '45) (at REIMS, FR.)

• STRONBERG, GER. (DIV. HDQ.) (16 MAY '45)

(A) • NICE, FR. (16/26 JUNE '45) (RER OBER INGELHEIM)

• ETTLINGEN, GER. (14 JULY '45) (LINE OF KARLSRUHE, GER. 3)

• KARLSRUHE, GER. (DIV. HDQ'S) (AUG. '45)
HOUSE #101

(?) • BRUCHSAL, GER. (?) (429TH INF (?))

• GRENOBLE, FR. (AUG. 6 THRU
SEPT. 21, '45) (TWCA at THE
UNIV. OF GRENOBLE)



12/18/1944. SSgt Luce, head of Telephone Wiremen



TSgt Barrett, head of Radio Operators & Radio Repairmen



TSgt Barrett. My jeep with HQ 284 radio, pulled off road.



T/4 Joe Galvin, Senior Radio Operator and owner/operator of the "non-official" camera.



Group of radio operators and telephone repairmen. A one day temporary stop prior to evacuating the "Fortified Goose Egg". T/5 Brown, T/5 Born, T/4 Siegfried, T/5 Shaver, T/4 Hammerstrum, Pvt Prentergast, T/5 Edwards, Pvt Sharkley



T/5 Shaver, T/4 Hammerstrum, T/5 Edwards. Pvt Sharkey and Pvt Prendergast.

INDIANA
MILITARY
Organization

Page last revised

James D. West

www.IndianaMilitary.org

jimdwest@centurylink.net