

**SEPARATION CENTER AT ATTERBURY  
TURNS "G. I. JOE" INTO CIVILIAN**



Experienced personnel counsellors, especially trained for the work, interview the separatees and with the aid of the man's civilian and military history advise him how he can best readjust himself to civilian life. Left to right are a separatee; Maj. Herbert L. Whitcomb, chief of counselling branch; Sgt. S. M. Ashby, counsellor, and Maj. John H. Shevlin, counselling officer.

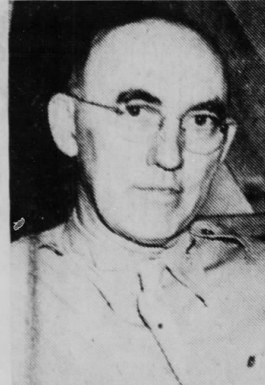
—U. S. Signal Corps Photos.

**Operation Underway  
To Aid Returning  
Veterans Resume  
Normal Lives**

CAMP ATTERBURY, Oct. 31.—It is a far cry from the regulated life of a soldier to that of a care-free civilian, but it takes Camp Atterbury's recently activated Separation Center only 48 hours, or even less, to accomplish that transformation.

The 1585th Service Unit, Separation Center, completes the War Department Personnel Center setup here. The Personnel Center, one of 18 in the United States, is under the command of Col. Welton M. Modisette, post commander, and includes the Reception Center, 1584th Special Training Unit, Reception Station, as well as the Separation Center. Thus Atterbury runs the gauntlet of Army life—induction into the service, special training for illiterates, furloughs and reassignment for overseas returnees, and, final separation.

The first trickle of what eventually will become a great stream of discharges started through the Separation Center early last week. There has been no appreciable in-



COL. BERT S. WAMPLER.

crease in the number of men being discharged from the Army, and there won't be until after the defeat of Germany.

**Is A Processing Agency**

The Separation Center does not determine the cause of discharge from the Army. It simply acts as the processing agency, after it has been

(Continued on Page Three.)

1944\_10\_31 Separation Station at Atterbury turns soldiers into civilians

Clipped By:



jimdwest

Thu, May 11, 2017